

LMX 64H



LMX 64



The speed bike for enduro riders !

“To train easily Enduro, to go discover new singletracks, to keep driving on roads where motorcycle is not allowed”

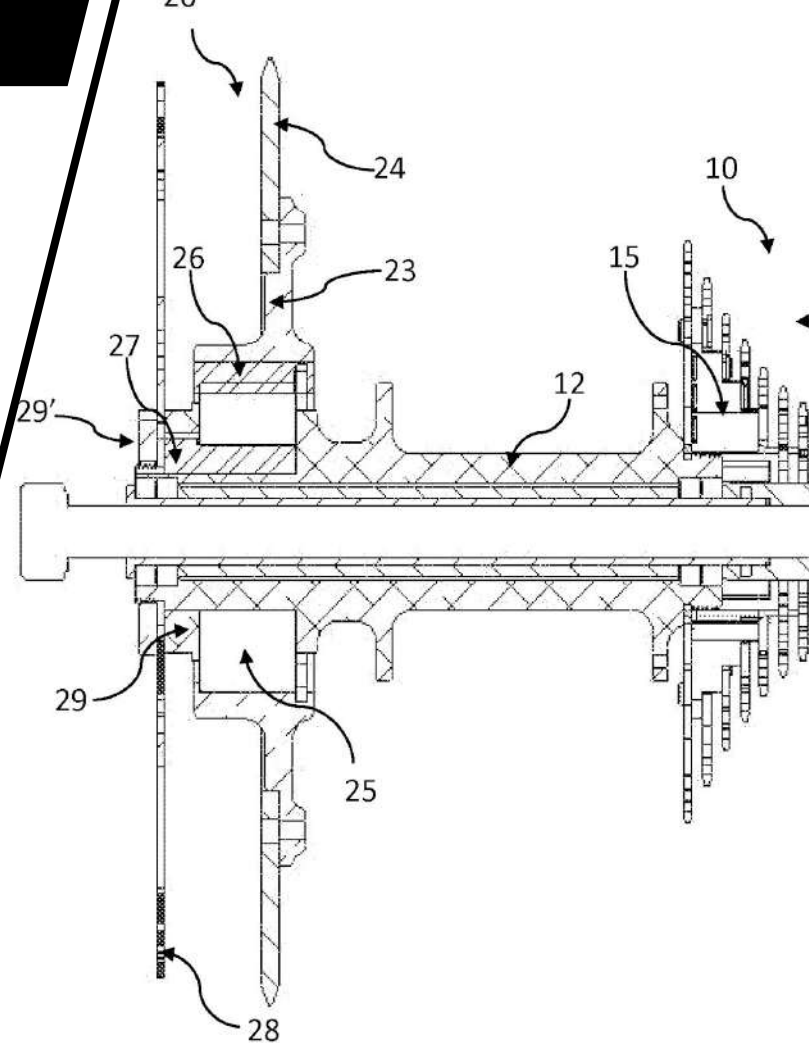
- Freedom of movement
- Little disturbances (no emission, no noise)
- Easy loading on a bike rack
- Removable battery
- Limited usage costs and maintenance (like a mountain bike)



Technology : Patented transmission

The LMX 64 patented double freewheel transmission makes the reliable powerful and slight off-road speed bike concept possible

- Two separate chains :
 - 1 for pedaling
 - 1 for motor
- No wear, no breakage regarding the pedaling chain
- Bike and motor modes are fully independent
- Patented and validated technology since 2017





LMX 64

Enduro mountain bike : The Power mountain bike !

The LMX 64 freeride speed bike is the most powerful on the market ! Through a contained weight of 27 kg, but with a 1500W engine (peak power 2500W) and fitted with a 850Wh battery, the LMX-64 is 5 times more powerful than other speed bike on the market.

The LMX64 is an Enduro speed bike in the speed bike category (= speed greater than 25 km/h). It represents a modern interpretation of the enduro speed bike. Easy handling, maneuverability to get the driving sensations and speed of an enduro mountain bike, but with less effort on the climbs and longer rides in duration and distance.

Lightweight, all-terrain, powerful, the LMX 64 embodies a new cross-over practice of enduro mountain biking. It is as comfortable in the city on cobblestones as he is in the countryside on steep paths.

Its ease of handling, its freedom from engine noise and vibrations allow experienced enduro riders to train and concentrate on trajectories, improvisation and fun.

LMX 64 : 1 speed bike = 2 uses

1. The « light » Enduro without drive licence.

- To (re)ride enduro 'behind house' just after the work
- To do 'urban' enduro when going to work or shopping
- Easy, simple and limited maintenance (washing, greasing, and tyre)
- No driving licence needed

2. The training speed bike for riders (enduro)

- To work on cardio and piloting in the same outing
- Simplified training (before-during-after)
- Easy to transport = quick loading on a bike rack (no trailer)
- Soundless for neighbours = evening and weekend trainings
- Downhill training = fluidity, trajectories
- Reduced usage cost and maintenance



LMX 64 POWER TRAIN



- Central motor
- Type : Brushless
- Peak power 2.5 kW
- Rated power 1.5 kW
- Maximum torque 23 Nm on motor
- Air cooling system
- ECU : Brushless Advanced Controller FOC
- Limited maintenance (like standard electric-assist mountain bike)





- 52V/17.5Ah
- 70 lithium-ion cells (Samsung 18650)
- Capacity : 850 Wh
- Weight : 4.3 kg
- Range assistance 40 - 100km of riding
- Range between 25 and 35 km (without pedaling)
- Full charge 4 h
- 500 full cycles up to 70% of the initial capacity
- Removable, easy and quick replacement
- External charger 4 A – power supply 230 V
- Cost of an additional battery: **€738 incl. VAT**

- Torque sensor + handlebar throttle



- **Pedaling torque sensor** : Power proportional to the effort and the selected assistance mode.
- **Handlebar throttle** : Power proportional to the user instruction and the selected assistance mode.

The handlebar accelerator allows you to accelerate at any time to pass an obstacle or go uphill, even without pedalling!

- Frame material / rear subframe/ rocker arm : 6061-T6 Aluminium (aviation quality)
- Full frame weight : 4.5 kg
- Wheelbase 1220 mm (M size), 1290 mm (L size)
- Steering angle : 65 °
- Telescopic seatpost (adjustable at the handlebar) : 125 mm travel
- **Made in France**



➤ Front suspension :

- Suntour Durolux RC
- Air technology
- 36 mm diameter
- 180 mm travel
- Adjustments: pressure, compression et rebound



➤ Rear shock :

- DNM (brand)
- 180 mm travel
- Compression, rebound, preload adjustments
- 2 eccentric plate adjustments



A MODERN ENDURO SPEED BIKE GEOMETRY



- **Front wheel**

- Rim : 35 mm x 27,5"
- Schwalbe tire : 27,5" x 2.6"



- **Rear wheel**

- Rim : 35 mm x 27,5"
- Schwalbe tire : 27,5" x 2.6"
- LMX Technology hub double transmission chain (patent pending)



➤ Brakes

- TRP ZURICH disc brakes
- 203 mm Front / 203 mm Rear 2.3 mm Disc
- 4 front pistons / 4 rear pistons

➤ Meter

- Color LCD screen :
 - Power
 - Speed
 - Odometer
 - Battery capacity in %
- 5 assistance modes



LMX 64 : the speed bike for enduro riders

➤ 2 versions

- Not street legal off-road **64T** version : on the market since early 2019
- Street legal moped **64H** version : first deliveries mai 2020



➤ Upgrade suspensions



- “DH” 200/180mm suspension **1660€ including VAT**
 - Z58 bomber, 40 mm chassis, 200 mm travel
 - CR coil shock, 200 x 57 mm, 180 mm travel
 - Marzocchi Z1 coil suspension + CR coil **1310€ including VAT**
 - Z1 coil bomber, 36 mm chassis, 180 mm travel
 - CR coil bomber, 200 x 57 mm, 180 mm travel
 - “DH” front suspension SR Suntour RUX, 200mm RC2 **423€ including VAT**
 - Premium Ohlins suspensions **2175€ including VAT**
 - RXF 36 Coil or air 180 mm
 - TTX22 coil or air 200*57 mm
- Other assembly : contact us directly

➤ **Belt kit : 280€ including VAT**

- Quiet and grease-free transmission
- Possible to change from chain to belt without modification on the frame



➤ **Specific premium tires € 75 including VAT per pair**

- Eddy current tires 2.6" not road legal (standard on LMX 64T)
- Super moto X 2.8 "road tires road legal
- Tubeless assembly option

➤ **Telescopic seatpost 159€ including VAT**

- Telescopic seat post with handlebar lever
- 100 or 125 mm travel
- LMX 64T : standard
- LMX 64H : optional



LMX 64T CHARACTERISTICS



- **Weight : 28 kg**
- Top speed :
 - Illimited by pedalling
 - Motor assist up to max 45 km/h
- **Not road legal**
- Standard equipment : Telescopic seatpost and tubeless ready wheels and tires
- **Price : 5999€ TTC**
- **Direct order on <http://www.lmxbikes.com/fr/>**
Delivery everywhere in France within 72h depending on stock availability

LMX 64H CHARACTERISTICS - Moped version 45km/h



- **Weight : 31 kg**
- Top speed :
 - Illimited by pedalling
 - Motor assist up to max 45 km/h
- **Road legal to L1e-B under way (like 50cc moped)**
- **Price : 6299€ Incl VAT**
- Bonus and deductible governmental grants (France)
 - ADEME grant : 215€ TTC
 - Paris Region IDF grant : 400€
- **Direct order on <http://www.lmxbikes.com/fr/>**
- Delivery everywhere in France within 72h depending on stock availability